



**Purified anti-bovine IgG1 antibody**

**Catalogue number:** NEAH-3060

**Size:** 100µg, lyophilised.

**Clone:** IL-A60

**Historical Information:** Originated from parental line, IL-A60<sup>1</sup> (ILRI, Nairobi, Kenya)

**Description:** For the measurement of bovine IgG1 antibody. For *in vitro* research purposes only

**Product details:**

**Host species:** Mouse

**Reactivity:** Cattle<sup>1, 2</sup> IgG1

**Antibody type and isotype:** Monoclonal, mouse IgG1

**Formulation:** sterile PBS, pH7.5

**Manufacturer:** Green Mountain Antibodies for New England Animal Health ([neah.org](http://neah.org))

**Lot number:** 116.464

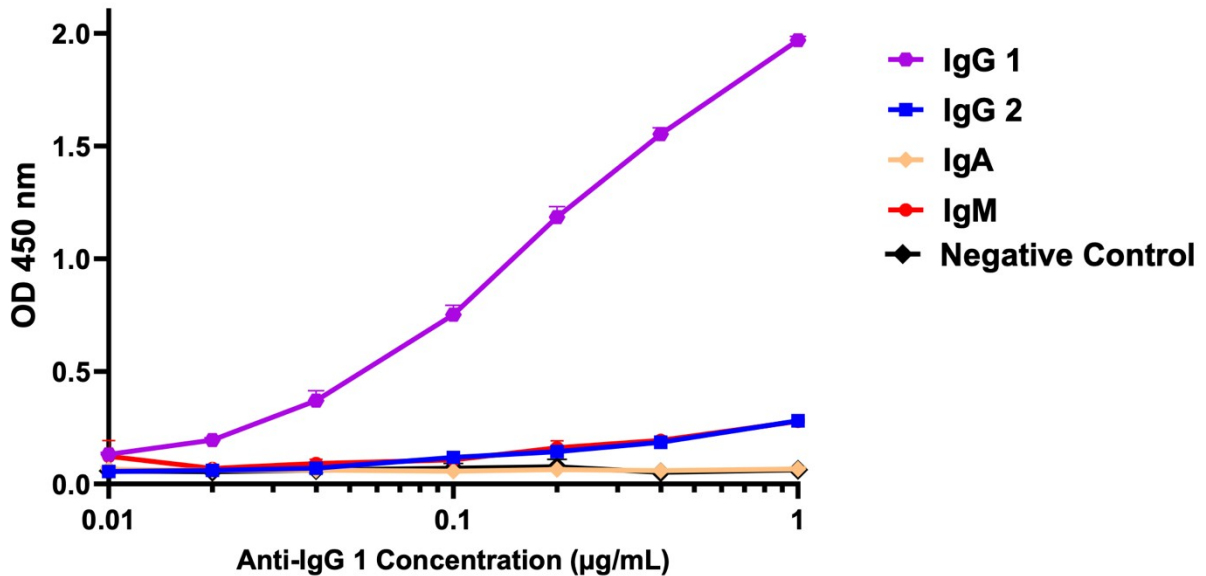
**Storage & Handling:** Resuspend in 0.1 ml of sterile water. The antibody solution should be stored at +4°C. Long term storage at -20°C, in 50% glycerol to avoid repeated freeze-thaw cycles.

**Application(s):** ELISA, affinity purification, western blot.

**Quality Assurance:** NEAH-3060 (ILA60) was tested against recombinant bovine IgG1, bovine IgG2, bovine IgG3, bovine IgA, and serum derived bovine IgM in ELISA. The antibody exclusively bound to bovine IgG1.

## NEAH -3060 Anti-Bovine IgG 1

Lot 116.464 QC 25FEB26



**Recommended Usage:** For detection of IgG1 by ELISA, recommended starting dilution of 1:250. Titrate to 1:10,000. It is recommended that a specific titration is performed for each application.

**References:** Vet. Immunology and Immunopathology. 1990. 24:267.  
[https://doi.org/10.1016/0165-2427\(90\)90042-Q](https://doi.org/10.1016/0165-2427(90)90042-Q)

**Payment Policy:** All NEAH Product Orders must be by Major Credit Card (VISA, Discover, Mastercard, or American Express)

**Shipping Policy:** All NEAH Products Only Ship to the USA and Canada. For NEAH Product orders to other North American countries or South America, please contact NEAH staff for shipment options. For all NEAH Product orders outside of the Western Hemisphere, please contact Pentlands Immunologics staff ([info@pentlandsimmunologics.org](mailto:info@pentlandsimmunologics.org)) for shipment options.