

Purified anti-ovine IgG2 Antibody

Catalogue number:

Size: 100µg

Clone: McM3

Description: For use in the measurement of ovine IgG2 sub-class antibody. For *in vitro* research purposes only

Product details

Reactivity: Sheep

Antibody type and isotype: Monoclonal, IgG3

Host species: Mouse

Formulation: sterile PBS, pH7.5

Concentration: 1.33mg/ml

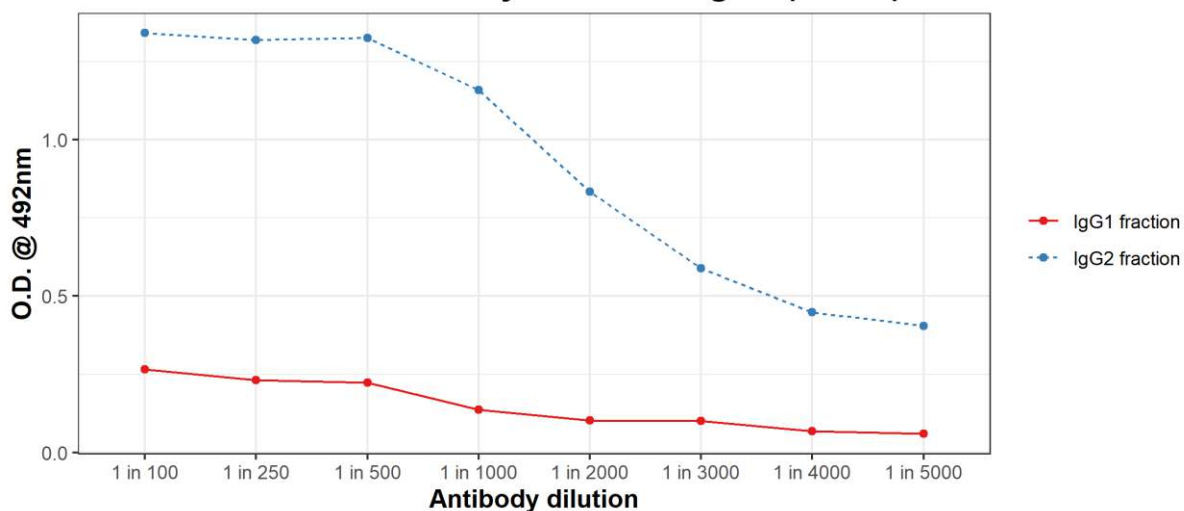
Lot number: 060121-01

Storage & Handling: The antibody solution should be stored at +4°C. Long term storage at -20°C, avoid repeated freeze-thaw cycles.

Application(s): ELISA

Quality Assurance: By direct ELISA using IgG1 and IgG2 enriched fractions from ovine serum purified via protein A Sepharose column fractionation.

Detection of ovine IgG1 and IgG2 enriched fractions by anti-ovine IgG2 (McM3)



Recommended Usage: For antigen-driven IgG subclass measurement, suggested use at 1:500 dilution. It is recommended that a specific titration is performed for each application.

References:

K.J. Beh (1987). Production and characterization of monoclonal antibodies specific for sheep IgG subclasses IgG1 or IgG2. *Vet Immunol & Immunopath* **14**: 187-196.

Schmerr & Goodwin (1991) Separation of ovine IgG1 and IgG2 on protein A-Sepharose. *Comp Immunol, Microbiol and Inf Dis* **14**: 289-295

Nisbet *et al* (2019). The rational simplification of a recombinant cocktail vaccine to control the parasitic nematode *Teladorsagia circumcincta*. *Int J for Parasitol* **49**: 257-265.

Email: info@pentlandsimmunologics.org
www.pentlandsimmunologics.org

©Moredun Research Institute 2021

Moredun Research Institute, Pentlands Science Park, Bush Loan, Penicuik, EH26 0PZ, UK